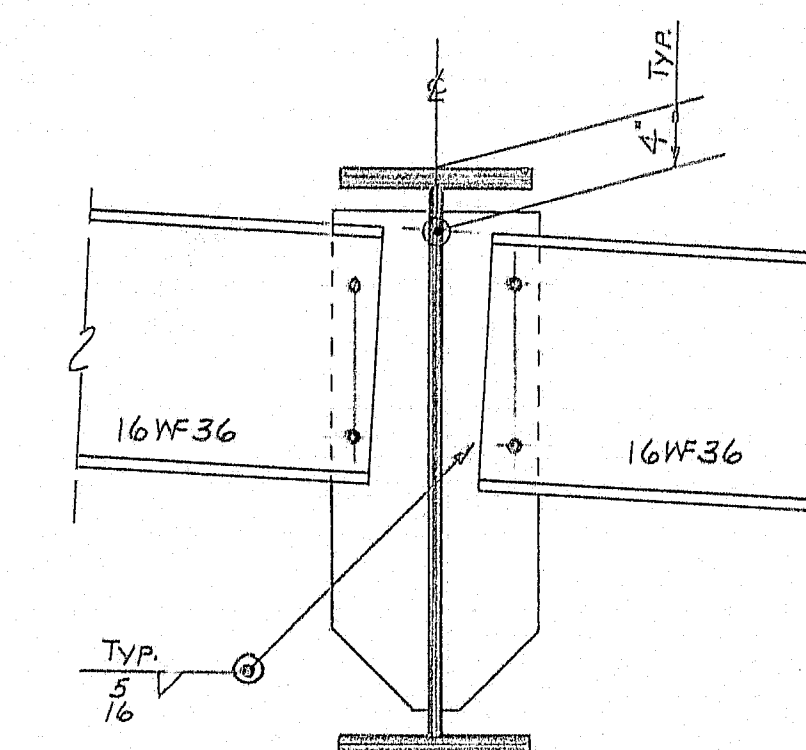
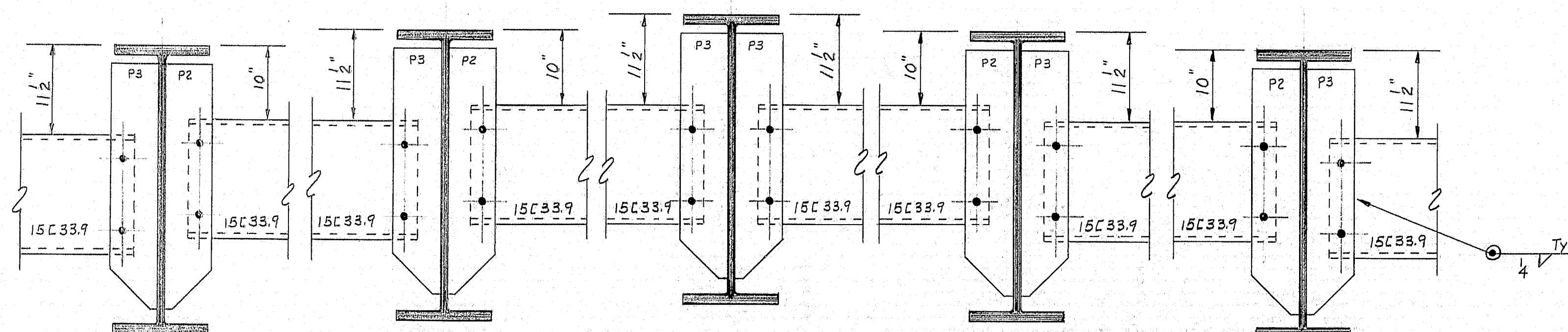


FRAMING PLAN
DIMENSIONS Horiz.

NOTES
All structural steel shall conform to the latest revision of the specifications ASTM A36 unless otherwise noted on standard details.
Bolts for armored joint shall be ASTM A325 7/8" heavy hexagon structural bolts with heavy semi-finished hexagon nuts and one hardened washer.
Fabricate and erect in accordance with M.S.H.O. standard specifications.



DIAPHRAGM CONNECTION



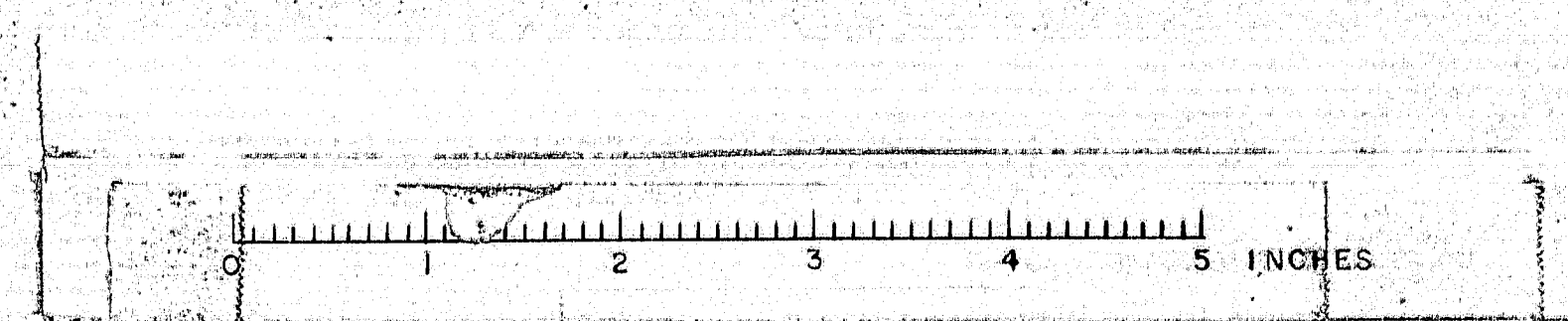
DIAPHRAGM CONNECTIONS

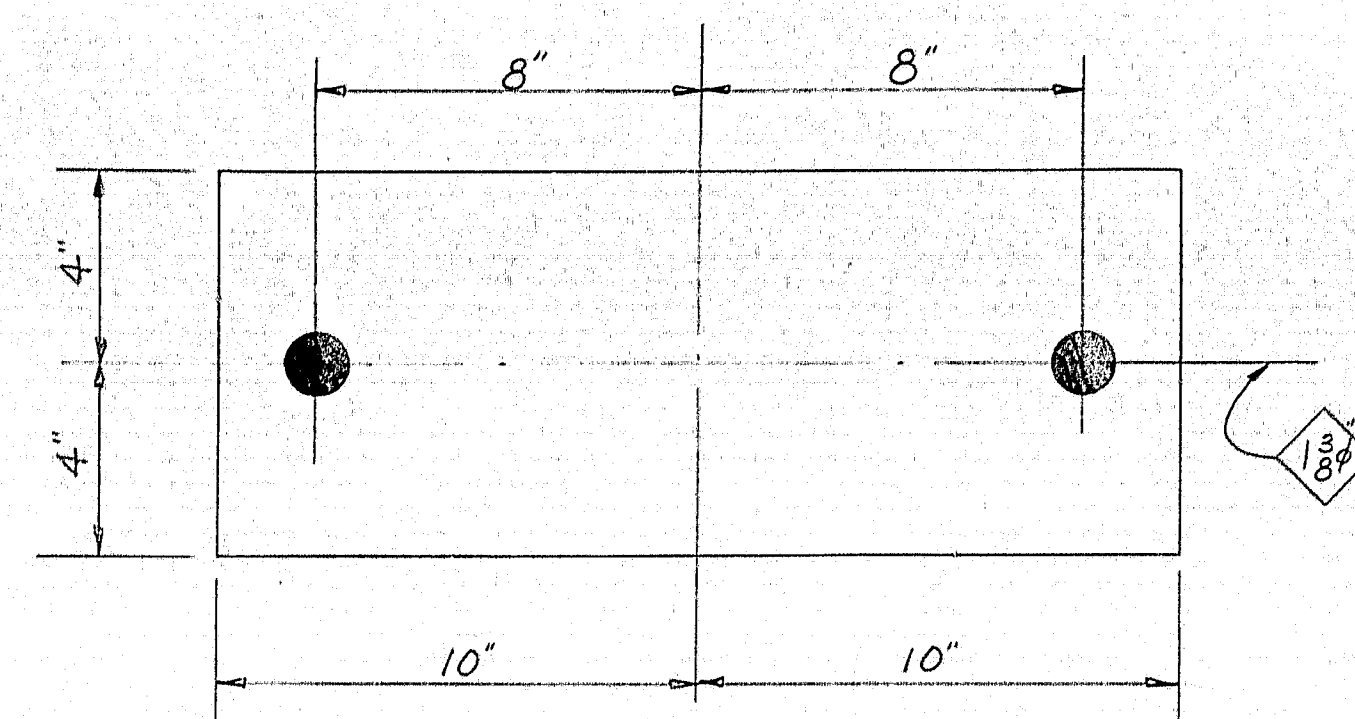
SHOP CONNECTIONS: WELD (E-70 LOW-HYDROGEN)
FIELD CONNECTIONS: BOLT & WELD
HOLES: AS NOTED
PAINT: STATE OF MAINE SPEC'S.

APP. AS NOTED 6-4-65

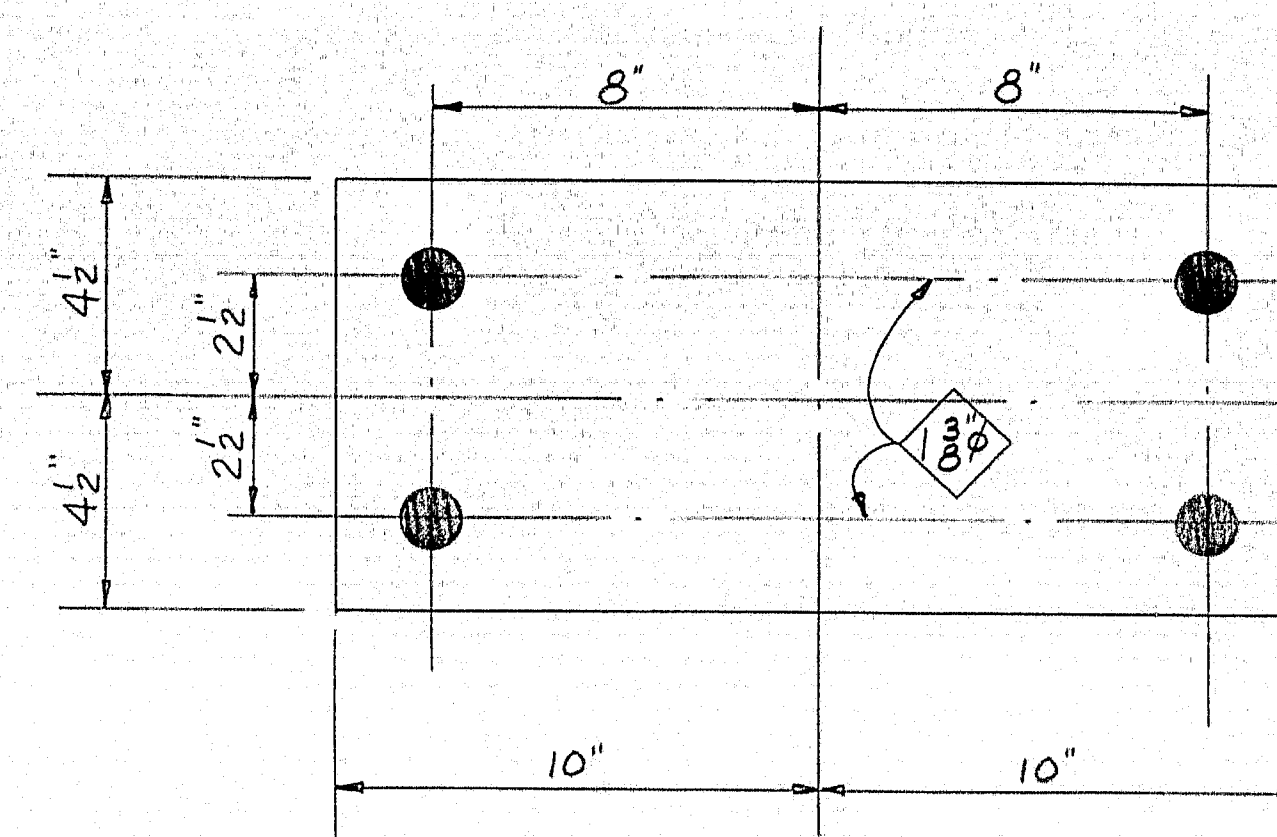
FRAMING PLAN		
PRINT ISSUE		
Bancroft & Martin Inc. Brewer, Maine		
5	STATE	8-9-65
3	CUST.	6-7-65
1	SHOP	6-7-65
2	F.A.	5-24-65
DRAWN	5-13-65 C.J.M.	
REVISION		
REVISION		
REVISION		
CUSTOMER CIANCHETTE BROS. INC.		
DESIGNER STATE HIGHWAY COMMISSION		
ORDER VERBAL		DWG. B65-73-E1

94-135

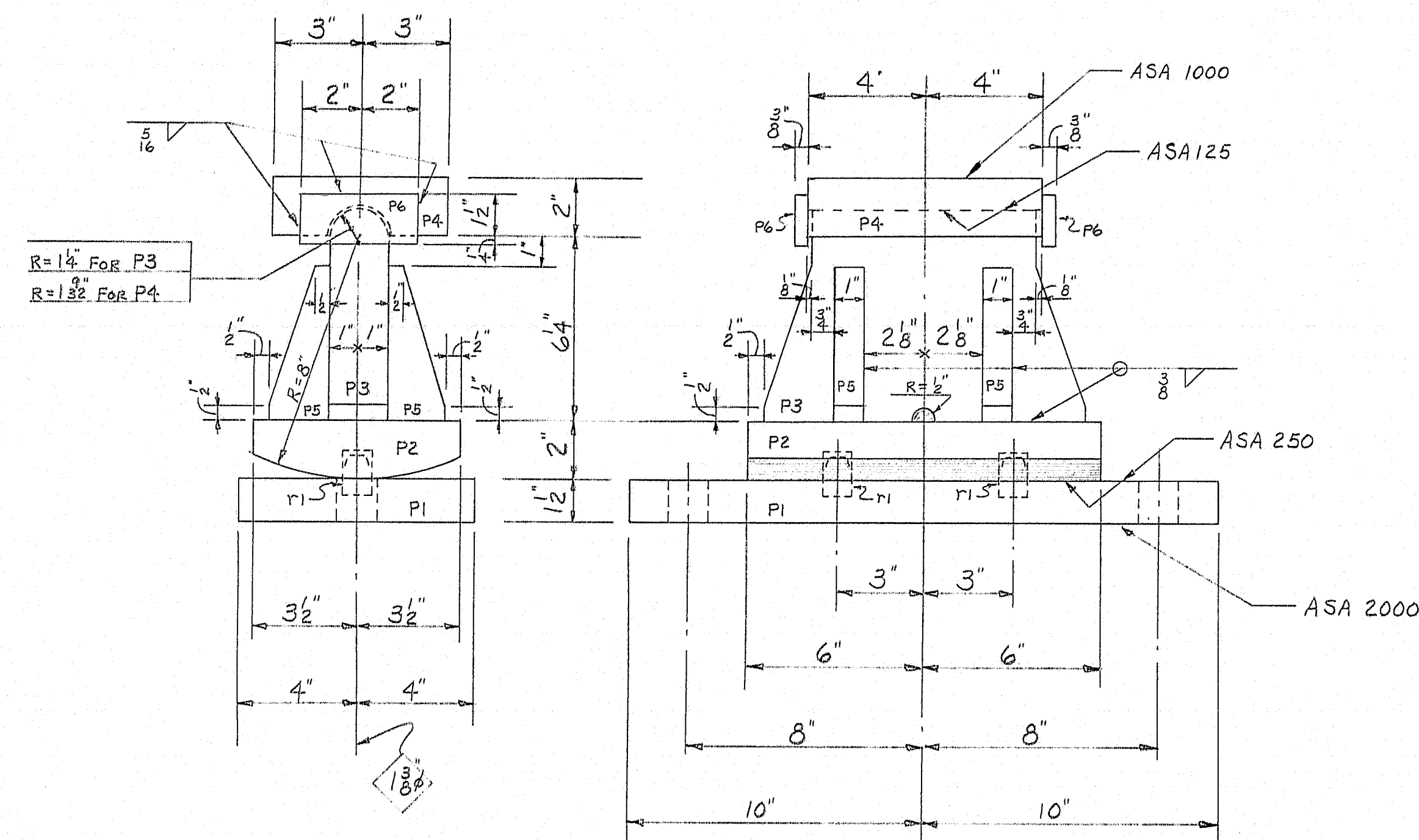




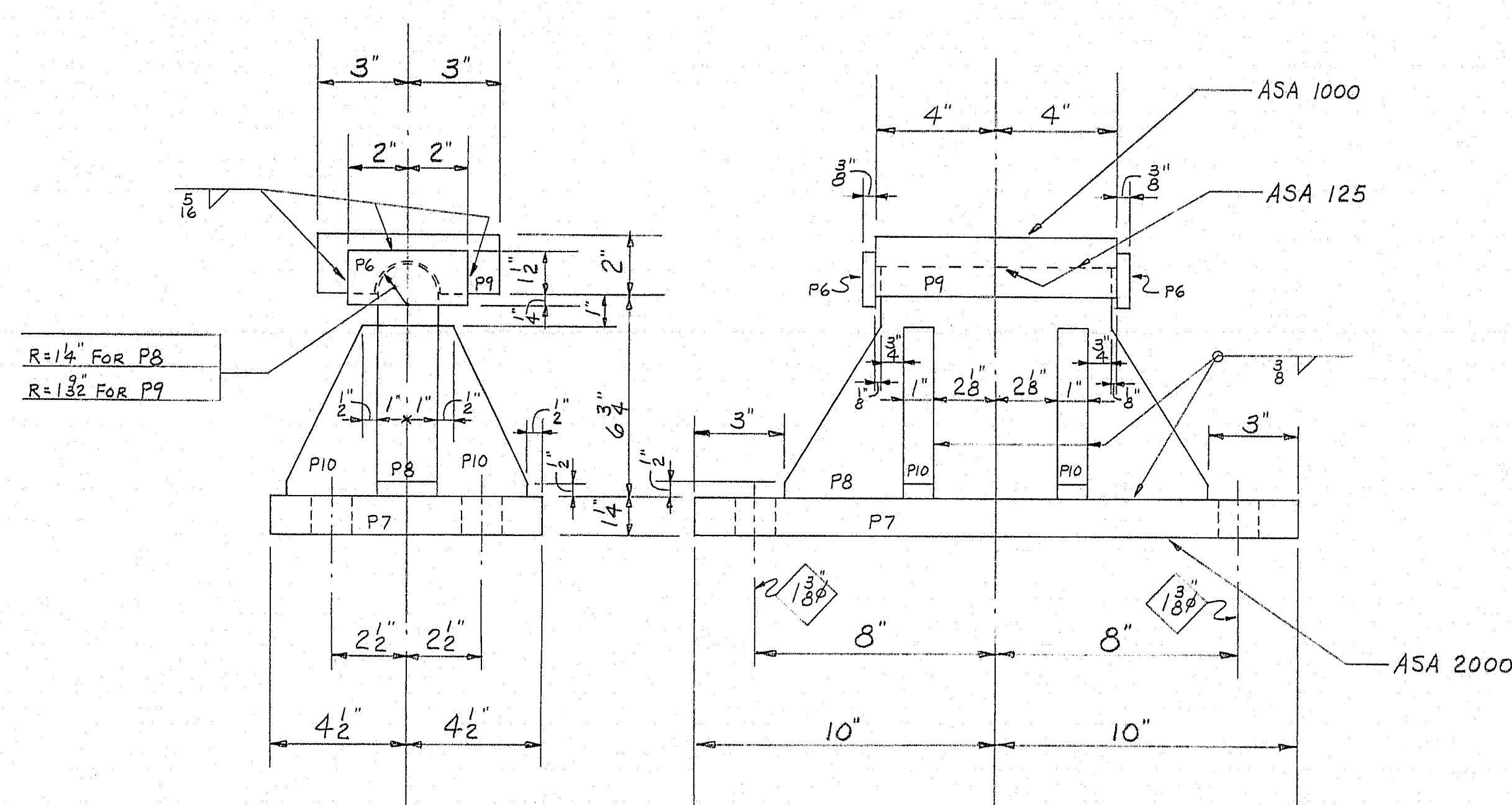
7-SP1



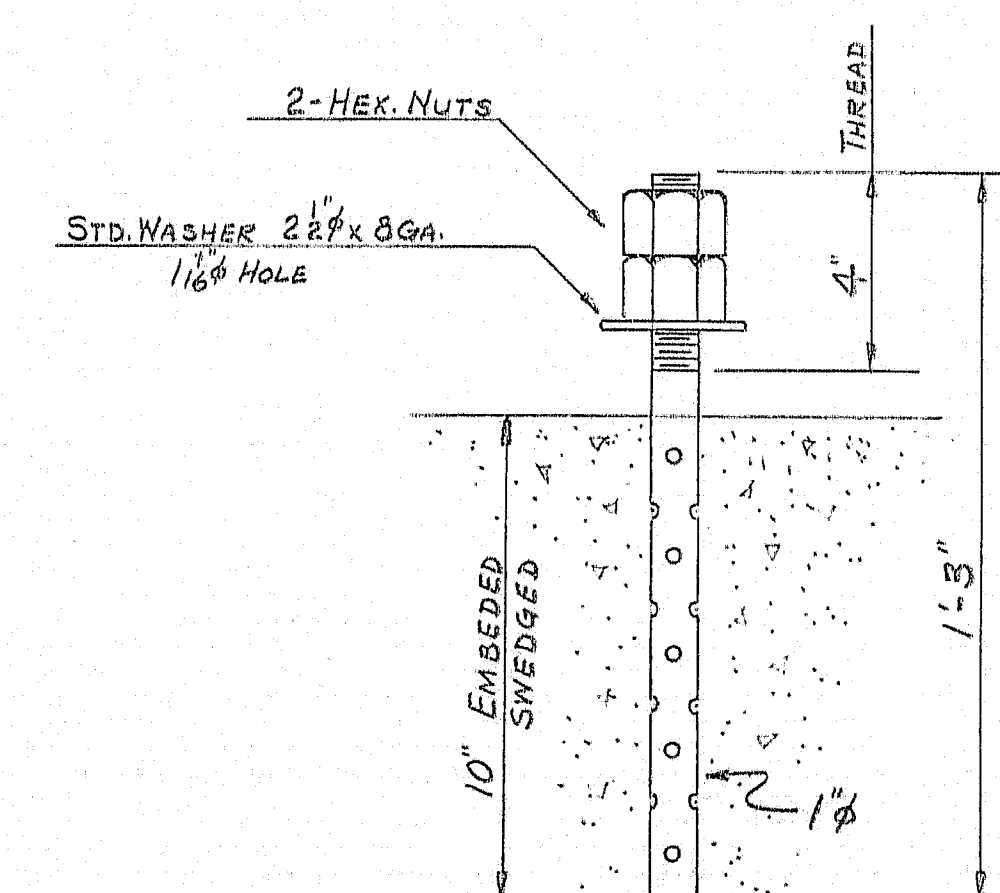
7-SP2



7-EPC-2

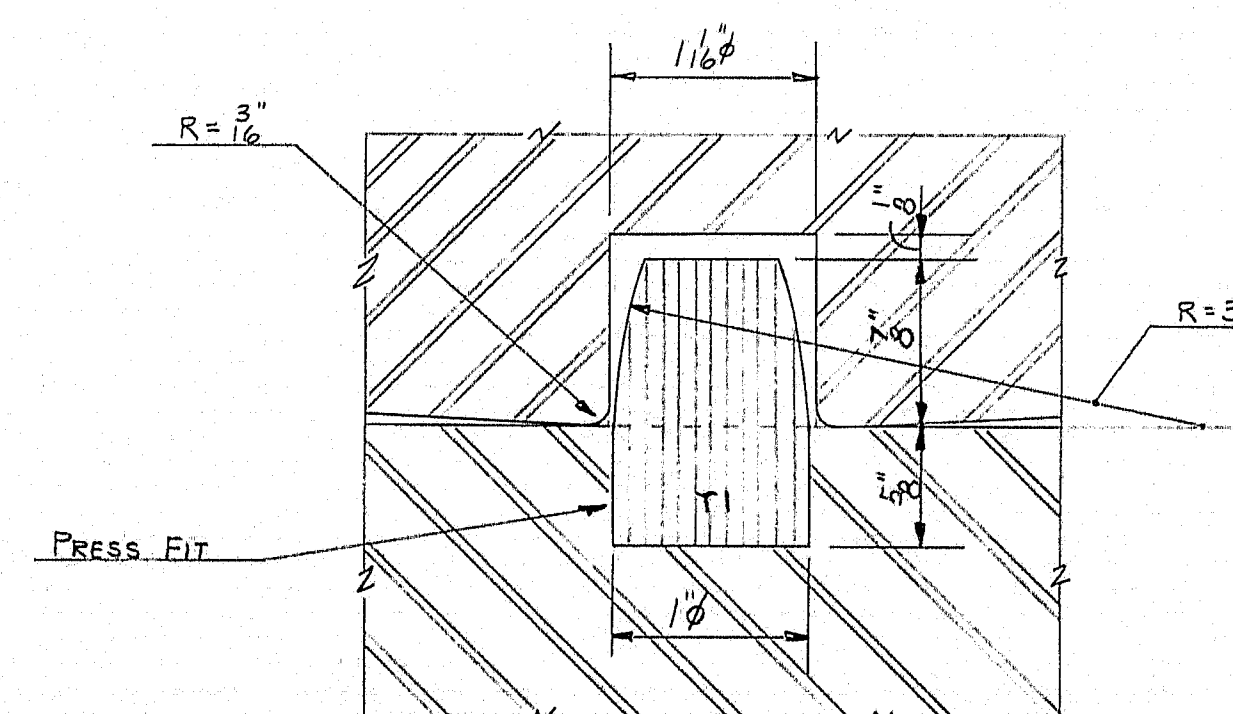


7-FPC-1



42-ABI

Paint NOT-S
No paint on anchor bolts - oil threads. No paint on top surface and 1/8" down from top on sides of sole plates. Coat with boiled linseed oil. No paint on surfaces finished ASA 250. Coat with hot mixture of white lead and tallow. No paint on surfaces finished ASA 125. No paint on surfaces finished ASA 1000. No paint on surfaces finished ASA 2000.



DOWEL DETAIL

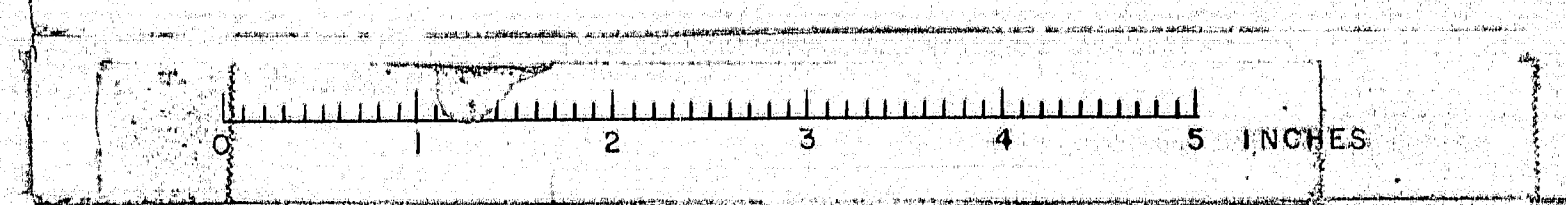
SHIP		BILL OF MATERIAL				DWG. B65-73-S1
MARK	NO.	MARK	SHAPE	LENGTH	WT.	REMARKS
EPC-2	7		PEDESTAL			
	7	P1	R 8x12	1 8		A36
	7	P2	R 7x2	1 0		
	7	P3	R 7 1/4 x 2	0 11		
	7	P4	R 6x2	0 8		
	28	P5	R 2x1	0 54		
	14	P6	R 1 1/4 x 3/8	0 4		
	14	P1	1/8 ROD	0 12		
FPC-1	7		PEDESTAL			A36
	7	P7	R 9x14	1 8		
	7	P8	R 7 1/4 x 2	1 2		
	7	P9	R 6x2	0 8		
	28	P10	R 3x1	0 54		
	14	P6	R 1 1/4 x 3/8	0 4		
ABI	42		1/8 ROD	1 3		SWEDGE ANCHOR
	84		1/8 HEX NUTS			
	42		1/8 STD. WASHERS			
SP1	7		R 8x8	1 8		FABCO
SP2	7		R 9x8	1 8		FABCO

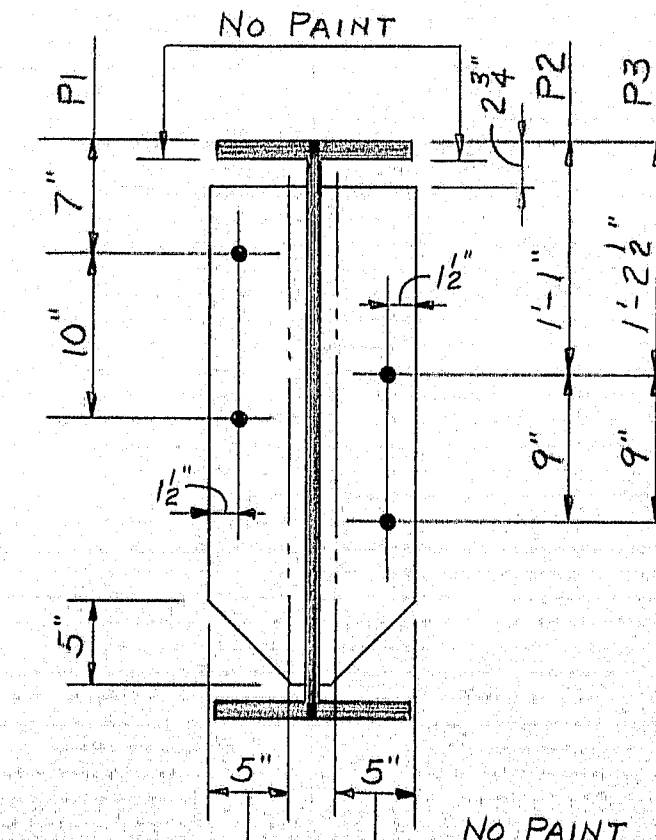
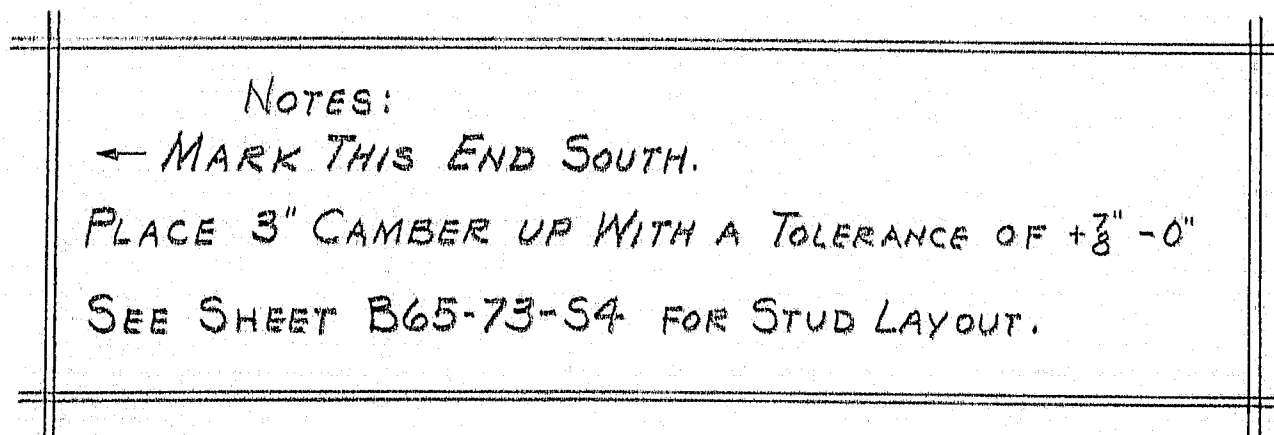
SHOP CONNECTIONS: WELD (E-70 LOW-HYDROGEN)
FIELD CONNECTIONS: BOLT & WELD
HOLES: AS NOTED
PAINT: STATE OF MAINE SPEC'S.

APP. AS NOTED 6-4-65

BEARING PEDESTALS			
PRINT ISSUE		Bancroft & Martin Inc. Brewer, Maine	
5	STATE	8-9-65	INT. 95 OVER TIMONEY ROAD
3	CUST.	6-7-65	PROJ. NO. I-95-9(19) 285
2	PORT. REG.	6-7-65	SMYRNA, MAINE
2	FA.	5-24-65	CUSTOMER CIANCHETTE BROS. INC.
DRAWN	5-17-65	C.J.M.	DESIGNER STATE HIGHWAY COMM.
REVISION			
REVISION			
REVISION			
ORDER	VERBAL		DWG. B65-73-S1

94-136





SHOP CONNECTIONS: WELD (E-70 LOW-HYDROGEN)
FIELD CONNECTIONS: BOLT & WELD
HOLES: 15" ϕ
PAINT: STATE OF MAINE SPEC'S.

APP. AS NOTED 6-4-65			STRINGERS	
PRINT ISSUE			<i>Bancroft & Martin Inc.</i> <i>Brewer, Maine</i>	
5 STATE	8-9-65		INT. 95 OVER TIMONEY ROAD	
5 CUST.	6-7-65		PROJ. NO. I-95-9(19)285	
5 SHOP	6-7-65		SMYRNA, MAINE	
2 FA.	5-24-65		CUSTOMER <i>CIANCHETTE BROS. INC.</i>	
DRAWN	5-20-65	C.J.M.	DESIGNER <i>STATE HIGHWAY COMMISSION</i>	
REVISION				
REVISION				
REVISION				
			ORDER <i>VERBAL</i>	DWG. <i>365-73-53</i>

